



Axial Fan Catalog



12037 N. Hwy 99
Seminole, OK 74868
Phone: 405.382.0731
Fax: 405.382.0737
enviro@enviro-ok.com

Axial Fan Products



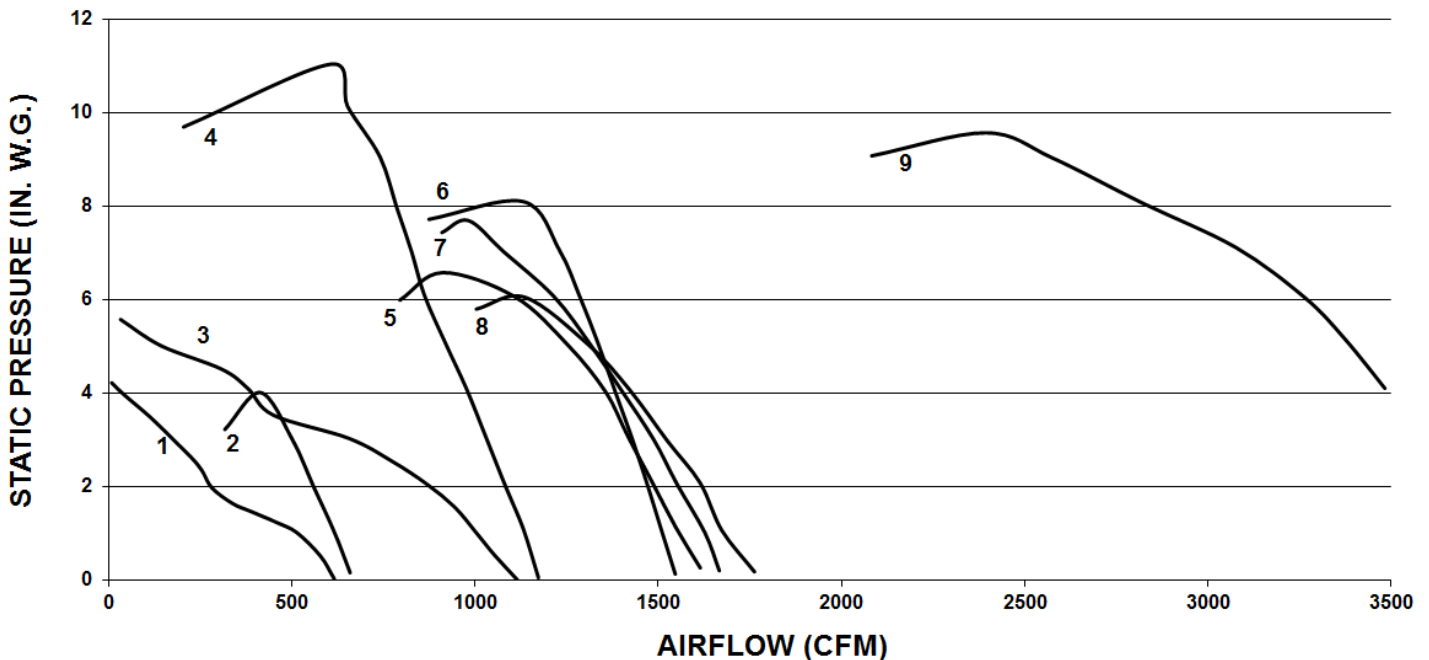
Enviro Systems offers a line of 28 volt DC and 3-phase, 115/200 volt AC vane axial and mixed flow fans to suit a range of operational conditions. These fans employ the latest in brushless motor technology for easy maintenance and long operational life. They also offer flexibility in speed range. With a simple resistor change, these fans can be modified to operate over a specified pressure and airflow condition. Simple hardware controls provide safety features such as over-temperature and over-current protection.



Enviro Systems also has extensive customization expertise. We can create a unique fan to fit your particular application.

	Part Number	Curve	Design Point			Power Supply	Weight (lbs)	Features	Applications
			Air Flow (CFM)	Static Pressure (inches water)	Current (amps)				
6" Diameter Fans	1133480-1	1	550	0.5	13	28 VDC	5		Cirrus SR-22 Condenser Fan
	1133660-3	2	550	2	18	28 VDC	9.5	Airflow Check Valve	Embraer Phenom 300 Ground Cooling Fan
	1270600	4	700	10	9	115VAC/3 ph./400 Hz	11		HH60 Medevac Evaporator Pallets
7" Diameter Fans	1250435-10	3	1000	1	18	28 VDC	8		Cessna Mustang/CJ Condenser Fan
	1250435-12	3	540	3.2	22	28 VDC	8.2		Cessna Sovereign Condenser Fan
	1133710-6	7	1300	5	86	28 VDC	15.7	Airflow Check Valve Inlet Screen	Embraer Phenom 100 Ground Cooling Fan
	1133710-15	6	1300	5	86	28 VDC	14.9	Airflow Check Valve Inlet Screen	Embraer Phenom 100 Ground Cooling Fan
	1133720-4	5	1400	3.5	80	28 VDC	14.3		Embraer Phenom 300 Condenser Fan
	1150300-2	8	1300	5	86	28 VDC	14.9	Airflow Check Valve Inlet Screen 2-Speed Motor	HondaJet Ground Cooling Fan
11" Diameter Fans	1270950	9	2950	7	19	115VAC/3 ph./400 Hz	27		HH60 Medevac Condenser Pallets

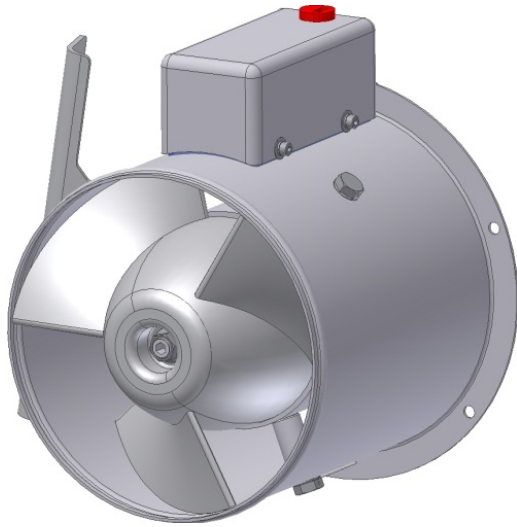
Numbered curves below correspond with a part number above. Click the part number for details about that product.



6" Vane Axial Fan 1133480-1

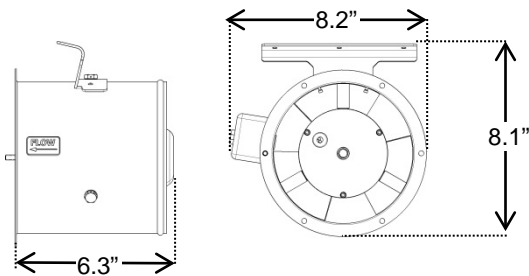


The 1133480 is a single-speed vane axial fan is currently in use as the condenser fan on the Cirrus SR-22 aircraft.



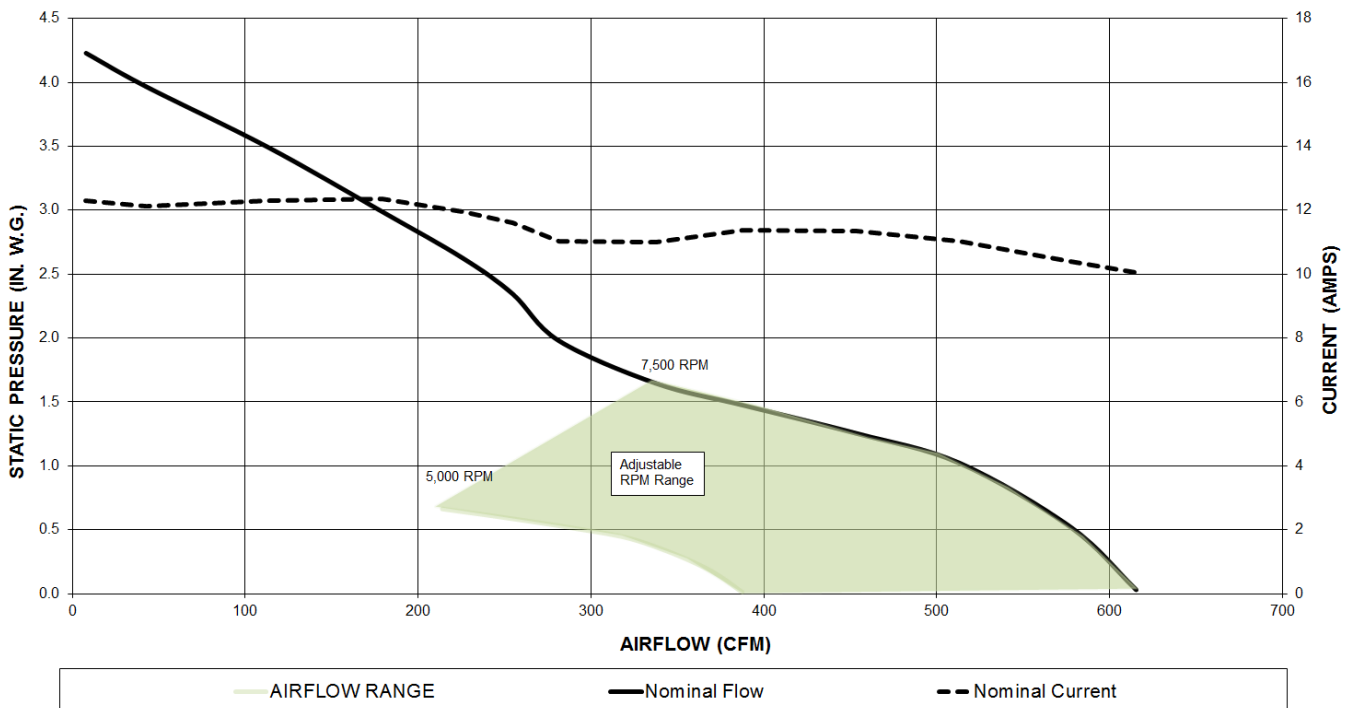
DESIGN SPECIFICATIONS

Airflow	550 SCFM
Static Pressure	0.5 IN. W.G. EXTERNAL TO FAN
Voltage	28.0 VDC
Current	13 AMPS
Weight	5 LBS. (MAX.)
MTBO	5000 Hours



Tested to some of the Electrical and Environmental Requirements of DO-160 Rev D. Click [HERE](#) for a detailed matrix of test requirements.

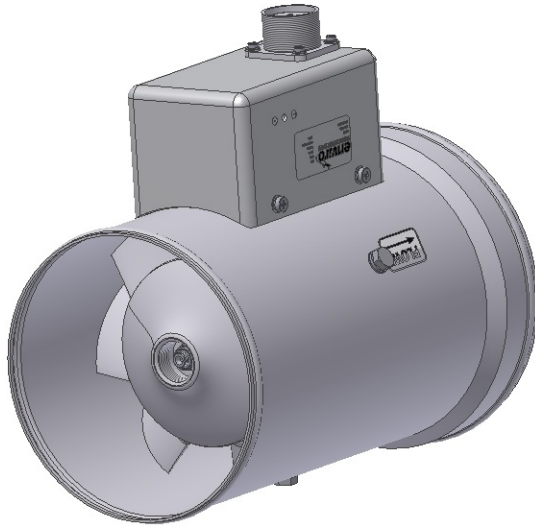
Please click [HERE](#) for a drawing of this product.



6" Vane Axial Fan 1133660-3

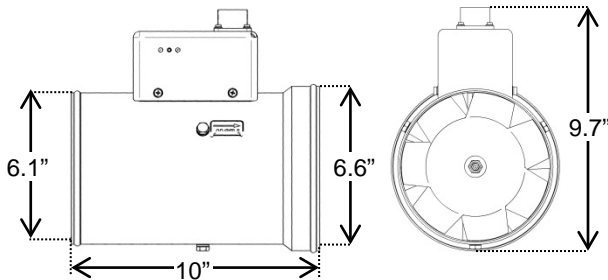


The 1133660 series fan is used as ground cooling fans on Embraer's Phenom 300. It is a single-speed vane axial fan with a one-way airflow check valve and integrated soft start feature.



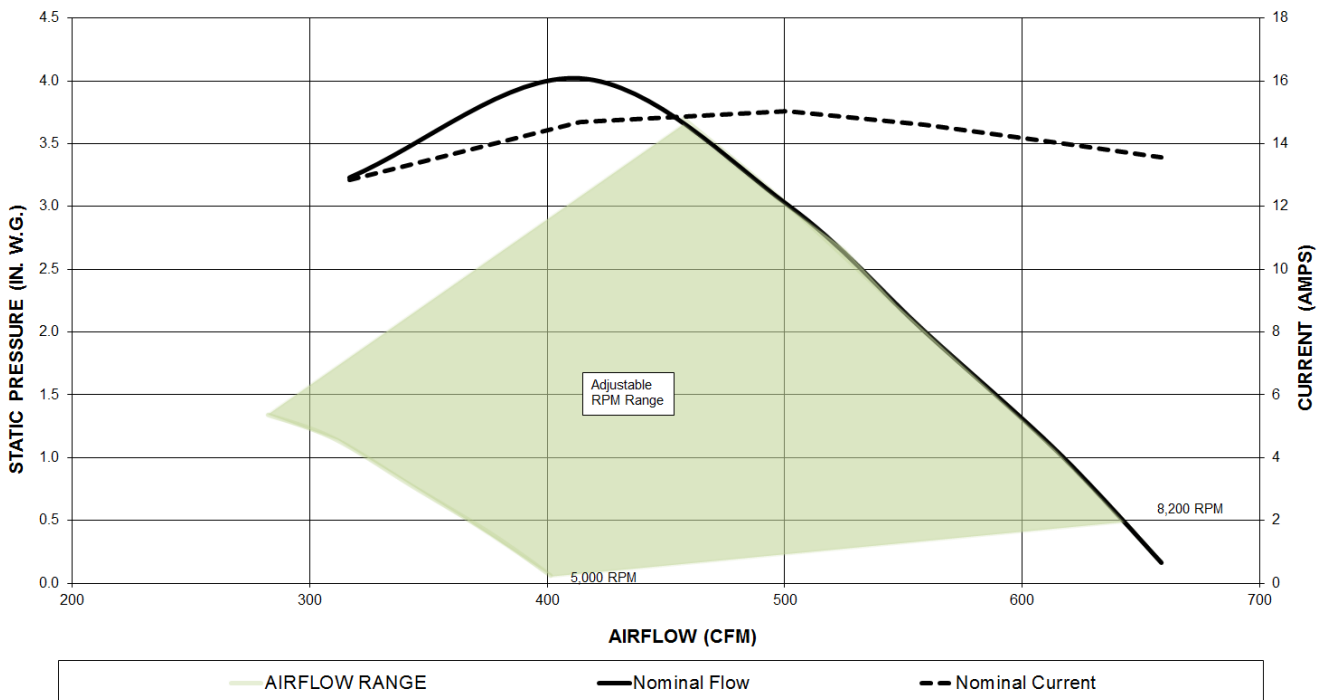
DESIGN SPECIFICATIONS

Airflow	550 SCFM
Static Pressure	2 IN. W.G. EXTERNAL TO FAN
Voltage	28.0 VDC
Current	18 AMPS (MAX.)
Weight	9.5 LBS. (MAX.)
Temperature	-65°F to 165°F
Altitude	-1K to 45K FT.



Tested to the Electrical and Environmental Requirements of DO-160 Rev E. Click [HERE](#) for a detailed matrix of test requirements.

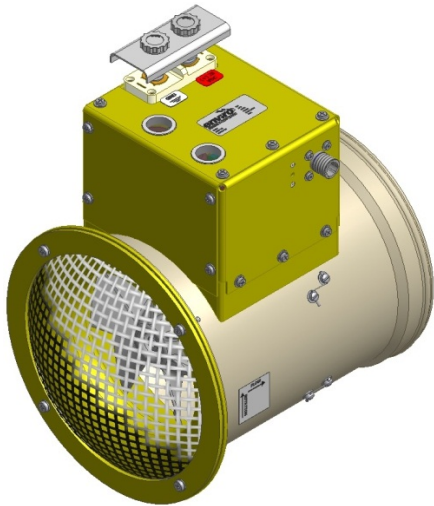
Please click [HERE](#) for a drawing of this product.



7" Mixed Flow Axial Fan 1133710-6

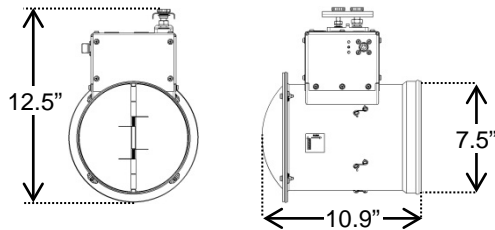


The 1133710 series is used as the ground cooling fan on Embraer's Phenom 100. It is a single speed, mixed flow fan with an inlet screen and airflow check valve.



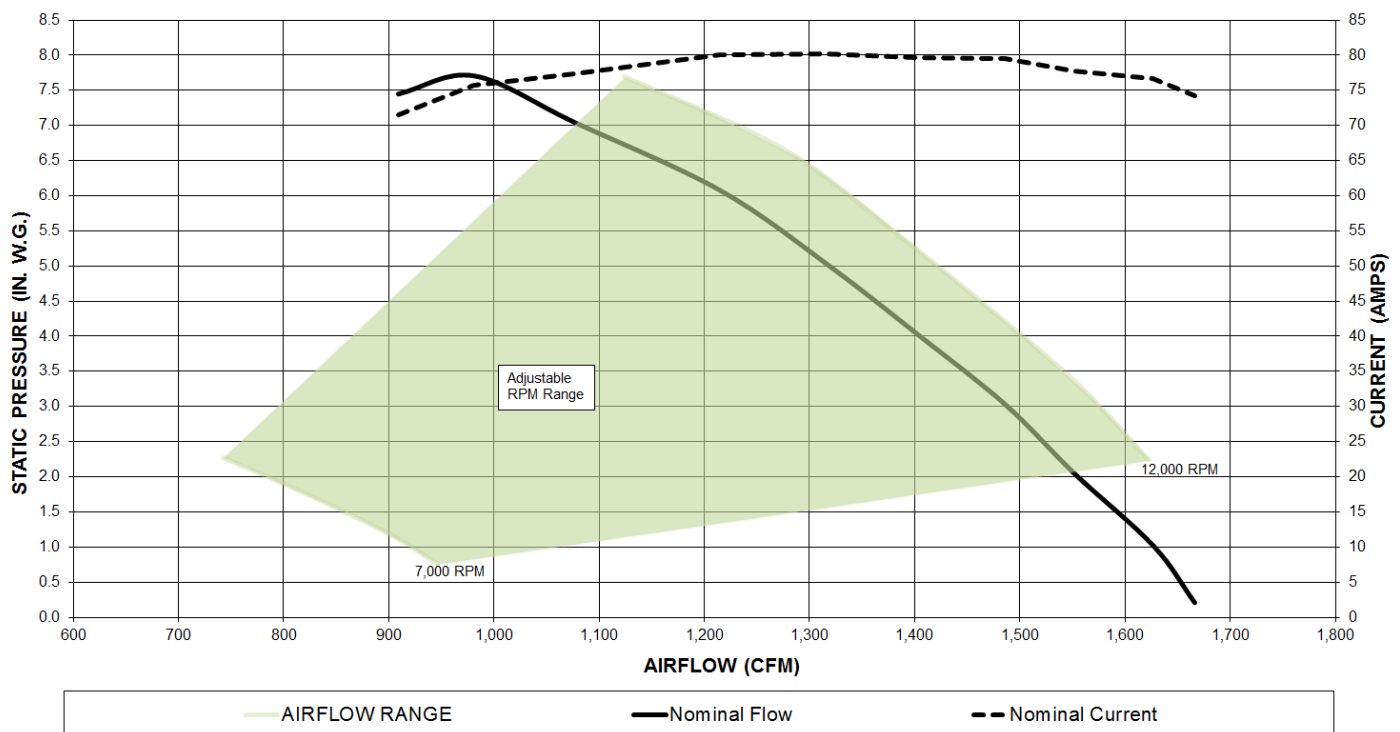
DESIGN SPECIFICATIONS

Airflow	1300 SCFM
Static Pressure	5 IN. W.G. EXTERNAL TO FAN
Voltage	28.0 VDC
Current	86 AMPS (MAX.)
Weight	15.7 LBS. (MAX.)
Temperature	-67°F to 158°F
Altitude	-1K to 45K FT.



Tested to the Electrical and Environmental Requirements of DO-160 Rev E.
Click [HERE](#) for a detailed matrix of test requirements

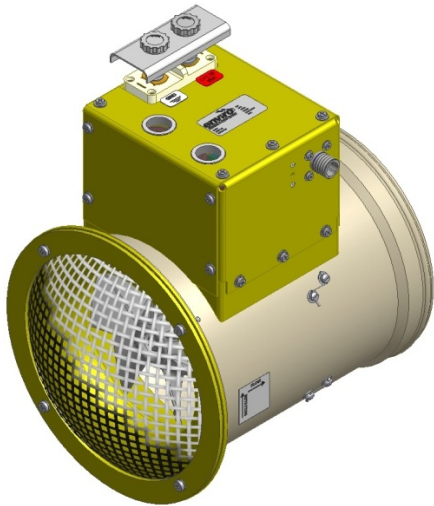
Please click [HERE](#) for a drawing of this product.



7" Vane Axial Fan 1133710-15

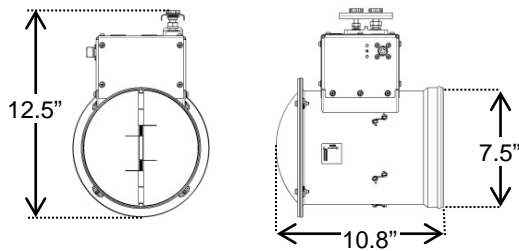


The 1133710 series is used as the ground cooling fan on Embraer's Phenom 100. It is a single speed, vane fan with an inlet screen and airflow check valve.



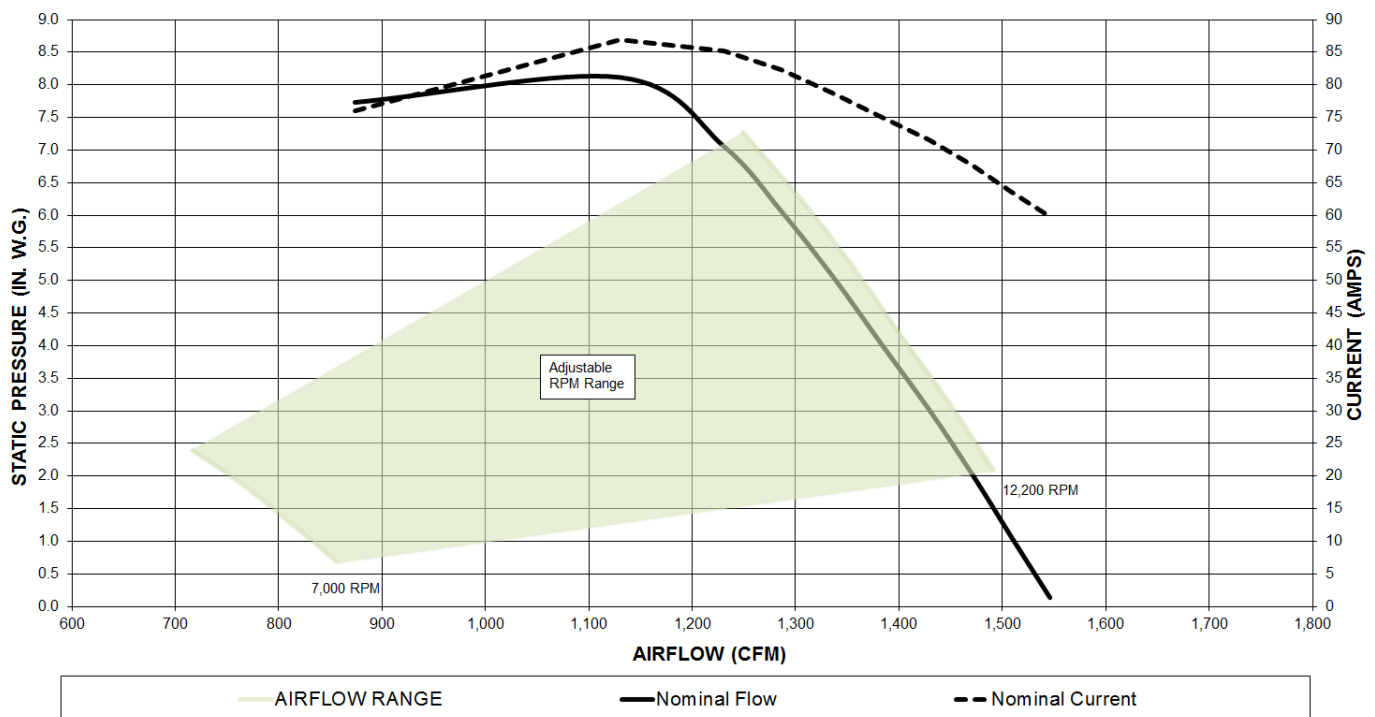
DESIGN SPECIFICATIONS

Airflow	1300 SCFM
Static Pressure	5 IN. W.G. EXTERNAL TO FAN
Voltage	28.0 VDC
Current	86 AMPS (MAX.)
Weight	14.9 LBS. (MAX.)
Temperature	-67°F to 158°F
Altitude	-1K to 45K FT.



Tested to the Electrical and Environmental Requirements of DO-160 Rev E.
Click [HERE](#) for a detailed matrix of test requirements

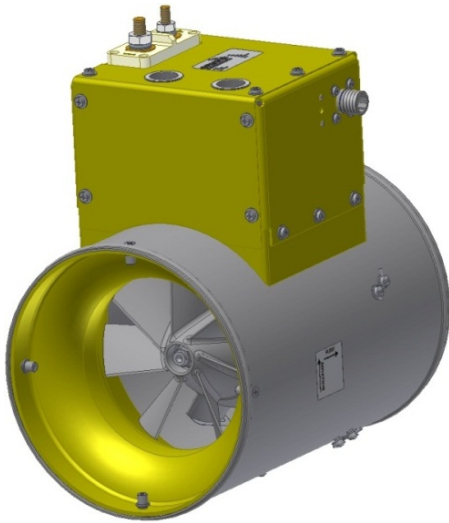
Please click [HERE](#) for a drawing of this product.



7" Mixed Flow Axial Fan 1133720-4

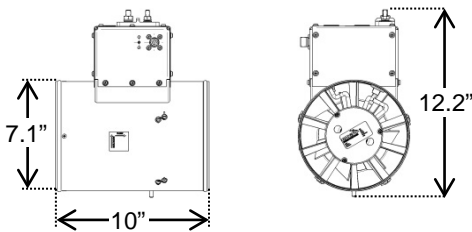


The 1133720 series is used as the condenser fan on Embraer's Phenom 300. It is a single speed, mixed flow fan with an inlet screen and airflow check valve.



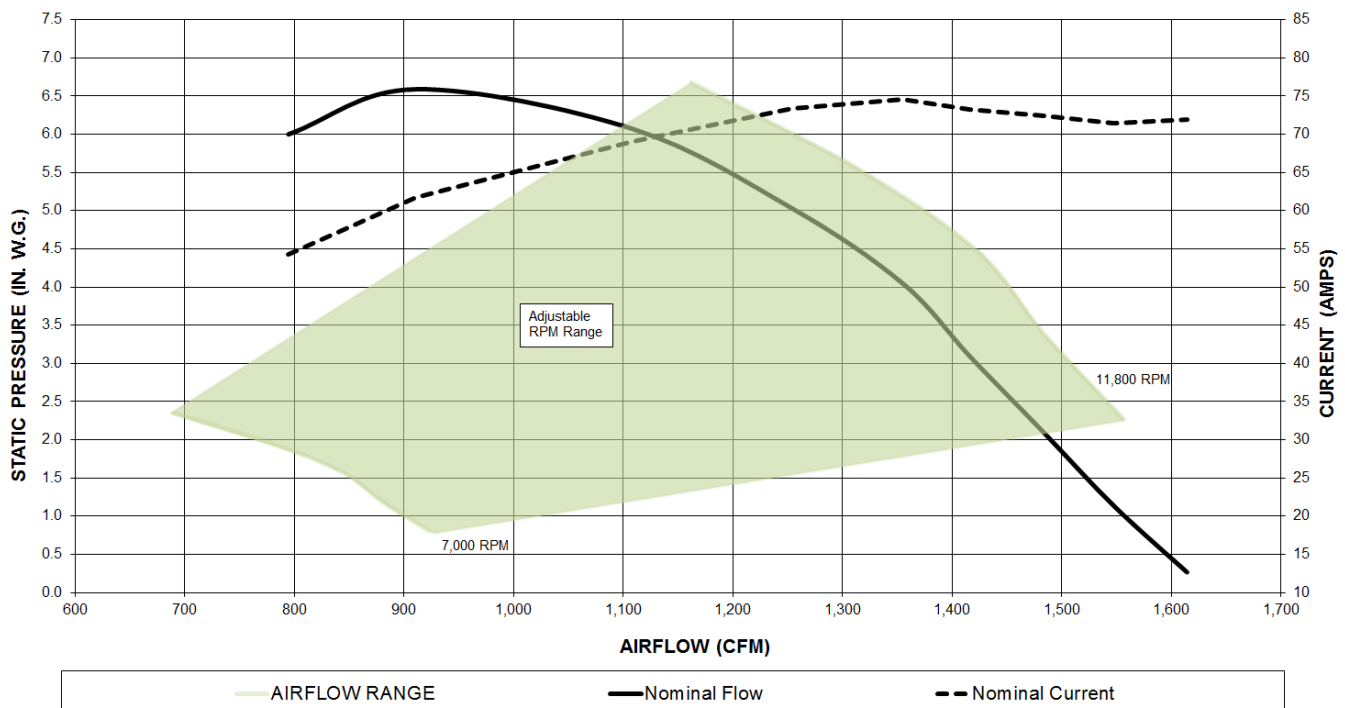
DESIGN SPECIFICATIONS

Airflow	1400 SCFM
Static Pressure	3.5 IN. W.G. EXTERNAL TO FAN
Voltage	28 VDC
Current	80 AMPS (MAX.)
Weight	14.3 LBS. (MAX.)
Temperature	-65°F to 165°F
Altitude	-1K to 45K FT.



Tested to the Electrical and Environmental Requirements of DO-160 Rev E.
Click [HERE](#) for a detailed matrix of test requirements

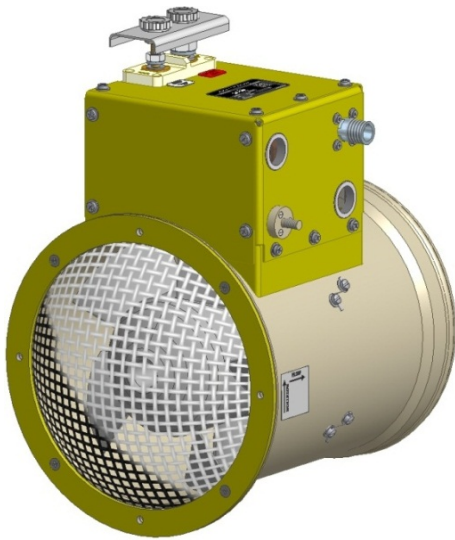
Please click [HERE](#) for a drawing of this product.



7" Mixed Flow Axial Fan 1150300-2

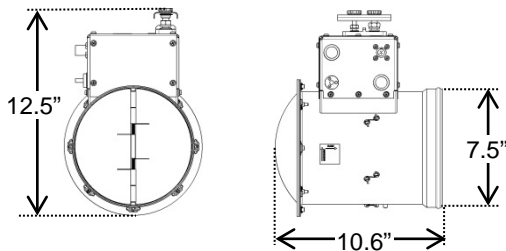


The 1150300 series fans are being used as the Ground Cooling Fan on Honda's new HondaJet aircraft. It features a two-speed motor with a one way airflow check valve.

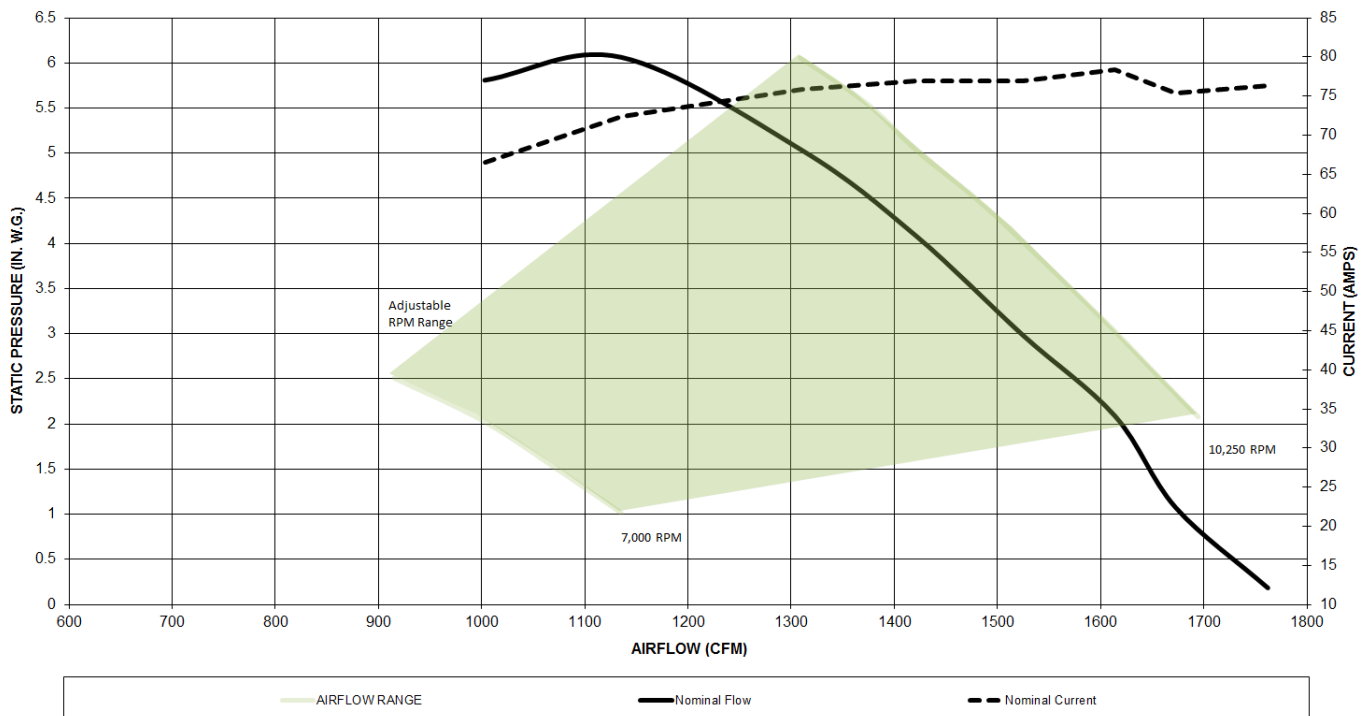


DESIGN SPECIFICATIONS

Airflow	1300 SCFM
Static Pressure	5 IN. W.G.
	EXTERNAL TO FAN
Voltage	28 VDC
Current	86 AMPS (MAX.)
Weight	14.9 LBS. (MAX.)
Temperature	-67°F to 158°F
Altitude	-1K to 50K FT.



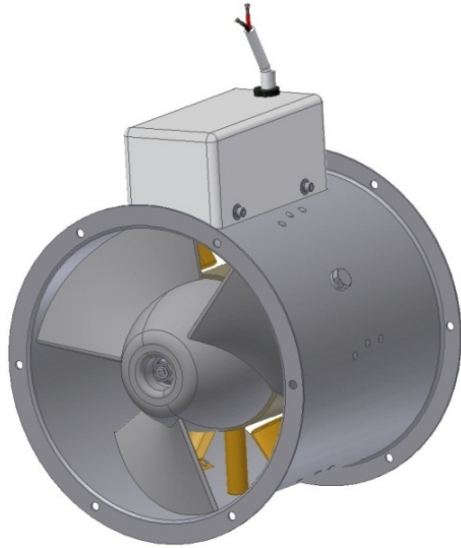
Please click [HERE](#) for a drawing of this product.



7" Vane Axial Fan 1250435-10

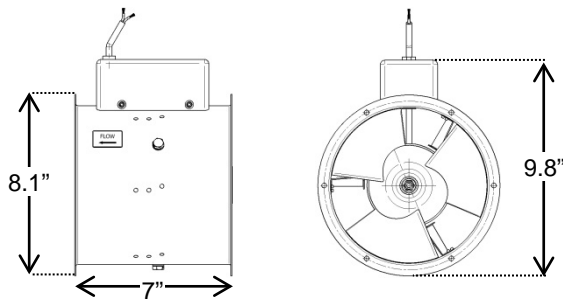


The 1250435-10 series fans are used by Cessna as condenser fans. It is a brushless, 3-blade fan with gentle stall characteristics. This allows a generally wider static pressure range.



DESIGN SPECIFICATIONS

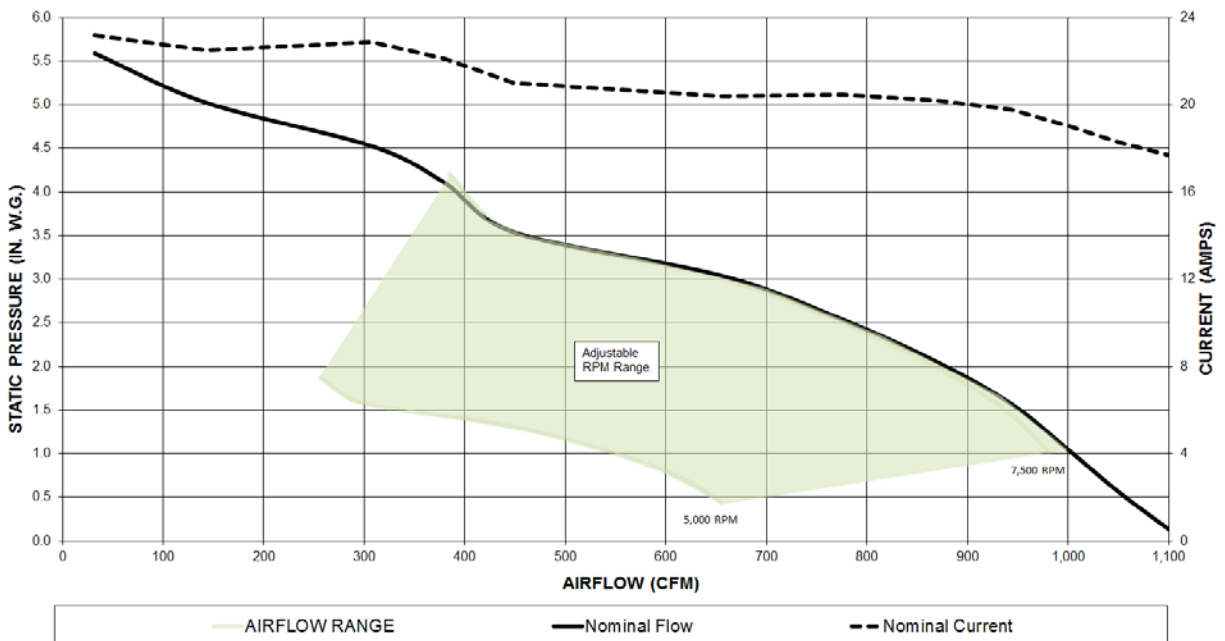
Airflow	1000 SCFM
Static Pressure	1.0 IN. W.G. EXTERNAL TO FAN
Voltage	28.0 VDC
Current	18.0 AMPS (MAX.)
Weight	8 LBS. (MAX.)
Temperature	-65°F to 165°F
Altitude	-1K to 45K FT.
MTBO	5000 Hours



Tested to the Electrical and Environmental Requirements of DO-160 Rev D.

Click [HERE](#) for a detailed matrix of test requirements

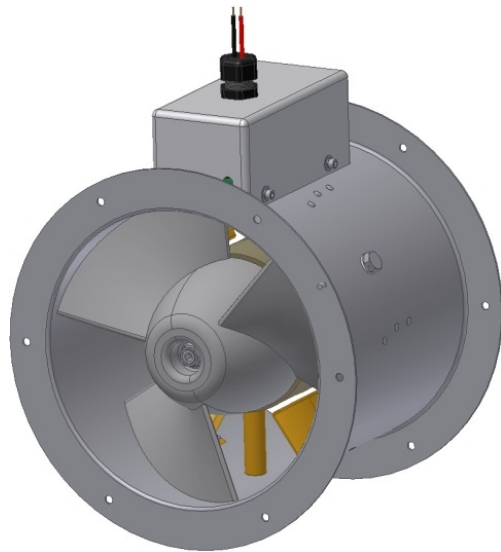
Please click [HERE](#) for a drawing of this product.



7" Vane Axial Fan 1250435-12

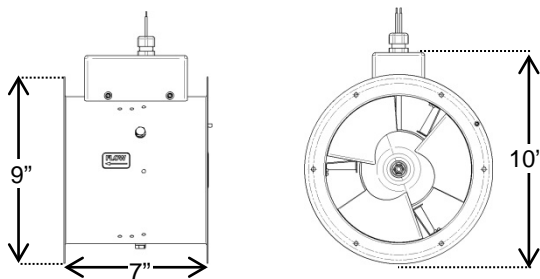


The 1250435-12 series fans are used by Cessna on their Sovereign aircraft as part of the bleed air system. It is a brushless, 3-blade fan with gentle stall characteristics. This allows a generally wider static pressure range.



DESIGN SPECIFICATIONS

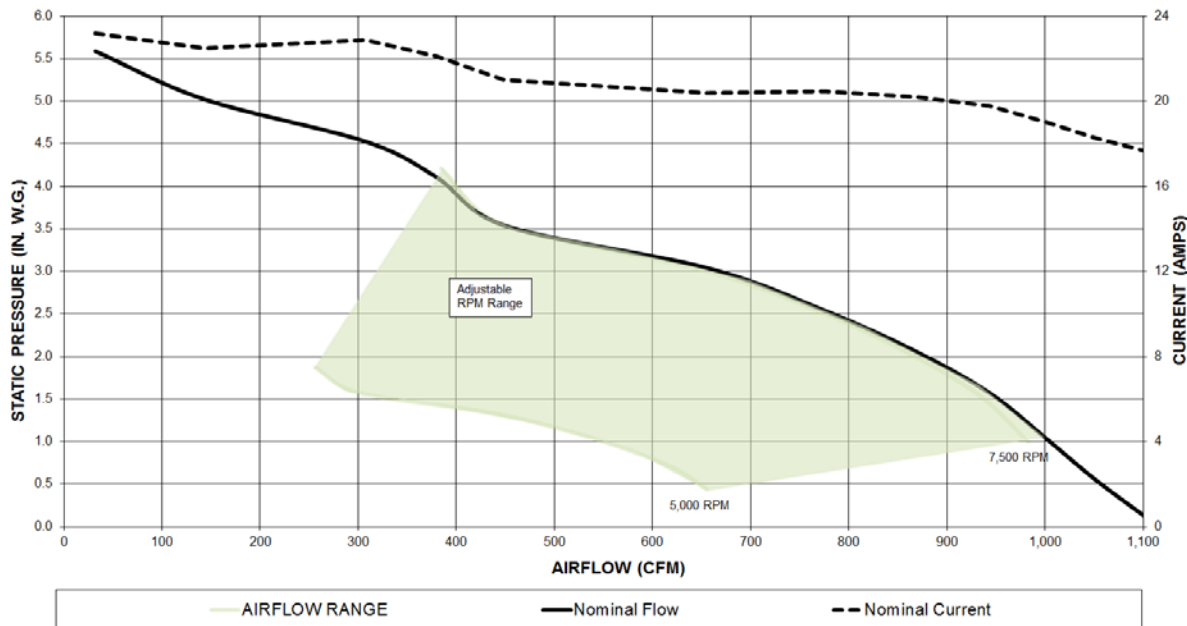
Airflow	540 SCFM
Static Pressure	3.2 IN. W.G. EXTERNAL TO FAN
Voltage	28.0 VDC
Current	22 AMPS (MAX.)
Weight	8.2 LBS. (MAX.)
Temperature	-65°F to 165°F
Altitude	-1K to 47K FT.
MTBO	5000 Hours



Tested to the Electrical and Environmental Requirements of DO-160 Rev D/E.

Click [HERE](#) for a detailed matrix of test requirements

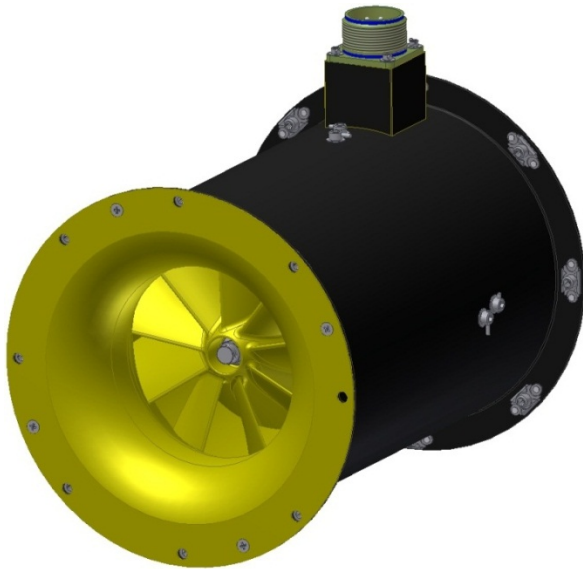
Please click [HERE](#) for a drawing of this product.



6" Vane Axial Fan 1270600-4

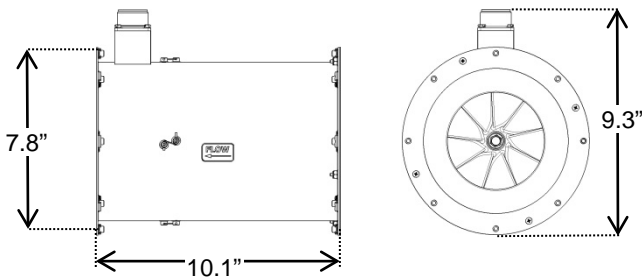


This large, vane axial fan is used as the evaporator fan on the HH60 Medevac helicopter palletized environmental control system.



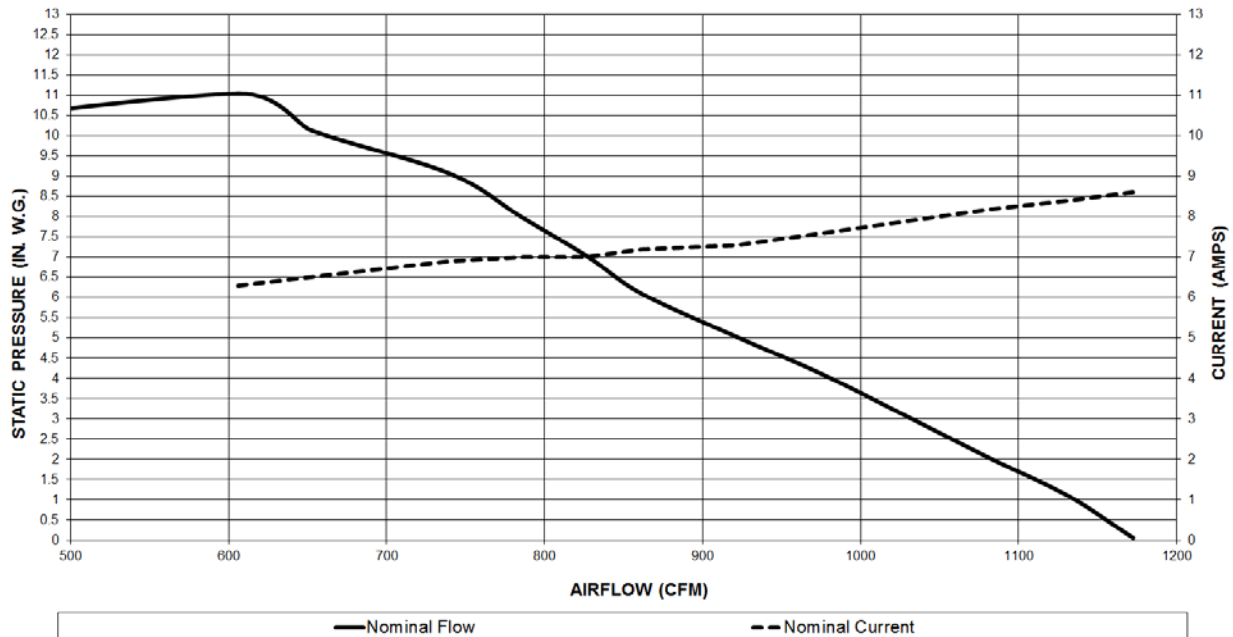
DESIGN SPECIFICATIONS

Airflow	700 SCFM
Static Pressure	9.8 IN. W.G.
	EXTERNAL TO FAN
Voltage	115/200 VAC, 3-PHASE, 400 Hz
Current	9 AMPS PER PHASE
Weight	11 LBS. (MAX.)



Tested to MIL-STD-810F, MIL-STD-461E, MIL-STD-704, and MIL-HDBK-407 Requirements. Please click [HERE](#) for a detailed test requirements matrix.

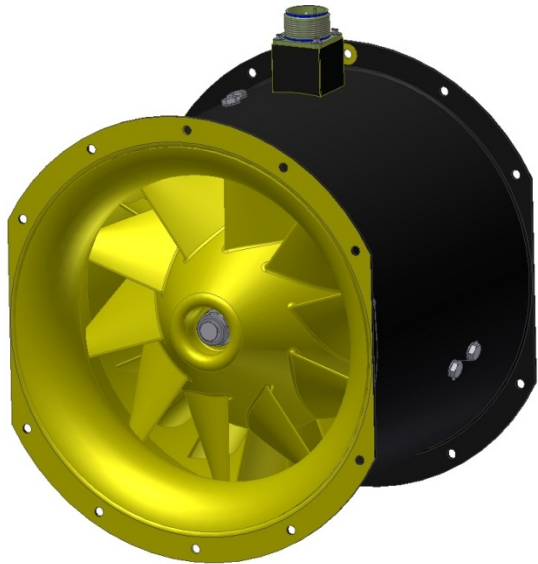
Please click [HERE](#) for a drawing of this product.



11" Vane Axial Fan 1270950-3

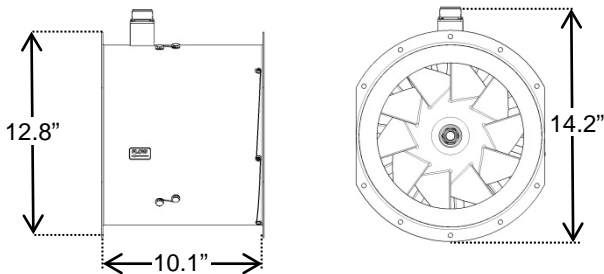


This large, vane axial fan is used as the condenser fan on the HH60 Medevac helicopter palletized environmental control system.



DESIGN SPECIFICATIONS

Airflow	2950 SCFM
Static Pressure	7 IN. W.G.
	EXTERNAL TO FAN
Voltage	115/200 VAC, 3-PHASE, 400 Hz
Current	19 AMPS PER PHASE
Weight	27 LBS. (MAX.)



Tested to MIL-STD-810F, MIL-STD-461E, MIL-STD-704, and MIL-HDBK-407 Requirements. Please click [HERE](#) for a detailed test requirements matrix.

Please click [HERE](#) for a drawing of this product.

